



IN THE SHADOWS:

Perceptions of In-Person, Phone, and Cyberstalking

Mattise Gauthier & Kristine A. Peace

STALKING IN CANADA



Ministère de la Justice
Canada

Department of Justice
Canada



Called criminal harassment. Includes behaviour that:

1. Gives you reason to fear for your personal safety
2. Has no legitimate purpose
3. Happens repeatedly

General Social Survey Rates (2014)

Note: No data for non-binary persons was collected at this time

Victimization rates estimated at 8% women and 5% of men

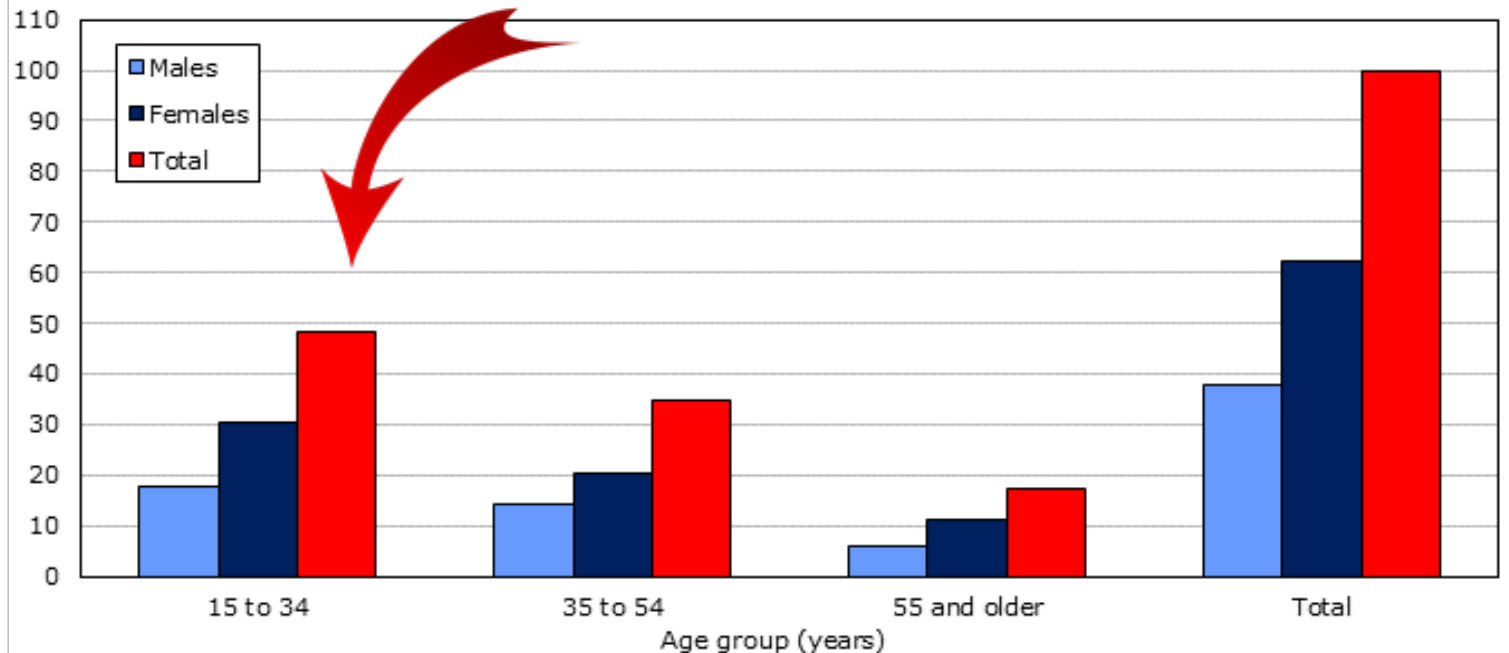


The majority of stalking victims are between 15-34 yrs old



Chart 3
Self-reported stalking victimization, by sex and age group, Canada, 2014

percent of victims



FORMS OF STALKING



OFFLINE



ONLINE



IN- PERSON





ALKING

CYBERSTALKING

CYBERSTALKING

CYBERSTALKING

CYBERSTALKING

CYBERSTALKING

CYBERSTALKING

CYBERSTALKING

CYBERSTALKING

CYBERSTALKING

CYBERSTALKING

CYBERSTALKING

CYBERSTALKING

CYBERSTALKING

CYBERSTALKING

CYBERSTALKING

CYBERSTALKING

CYBERSTALKING

CYBERSTALKING

CYBERSTALKING

CYBERSTALKING

CYBERSTALKING

CYBERSTALKING

CYBERSTALKING

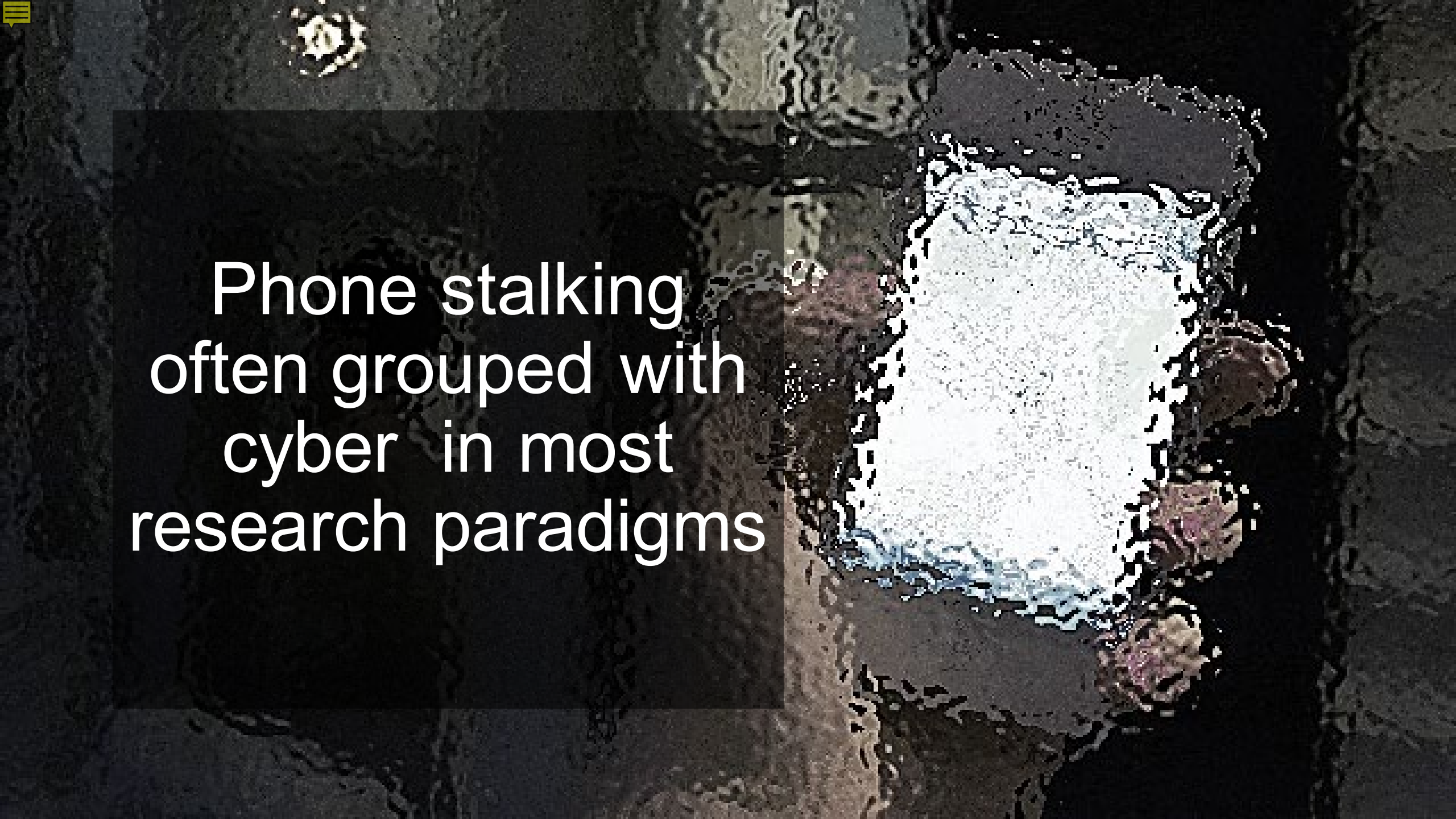
CYBERSTALKING

CYBER

STALKING

CYBERSTALKING

CYBERSTALKING



Phone stalking
often grouped with
cyber in most
research paradigms

Online stalking is:

- Underreported (less than 5%)
- Viewed as benign/non-malicious
- Less identifiable as harassment
- Normalized & seen as easily escapable
- Precursor to physical violence





GENDER ED CRIME?



Men = stalkers
Women = victims

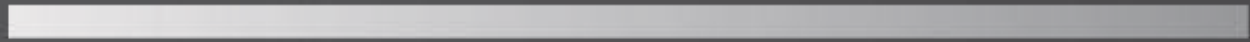
PRIOR RELATIONSHIP

Oh Hello,
YOU.

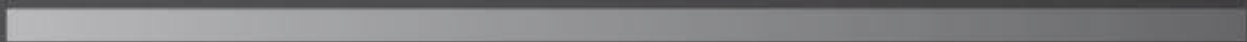
Former Partners

Acquaintances

Strangers



following. IT'S NOT A JOKE unwanted letters, watching
from afar, showing up invited, excessive emails, no joke,
unwanted gifts. IT'S NOT ROMANTIC excessive emails,
unwanted telephone calls, excessive text messages,
taking belongings, harassment. IT'S NOT OKAY not okay.



STOP STALKING

It's a crime.

SAMPLE CHARACTERISTICS & STUDY OVERVIEW

$N = 813$

Women: 65.4%

Men: 33.4%

NB: 1.2%

$M_{age} = 21.29$ ($SD = 5.75$)





TYPE OF STALKING

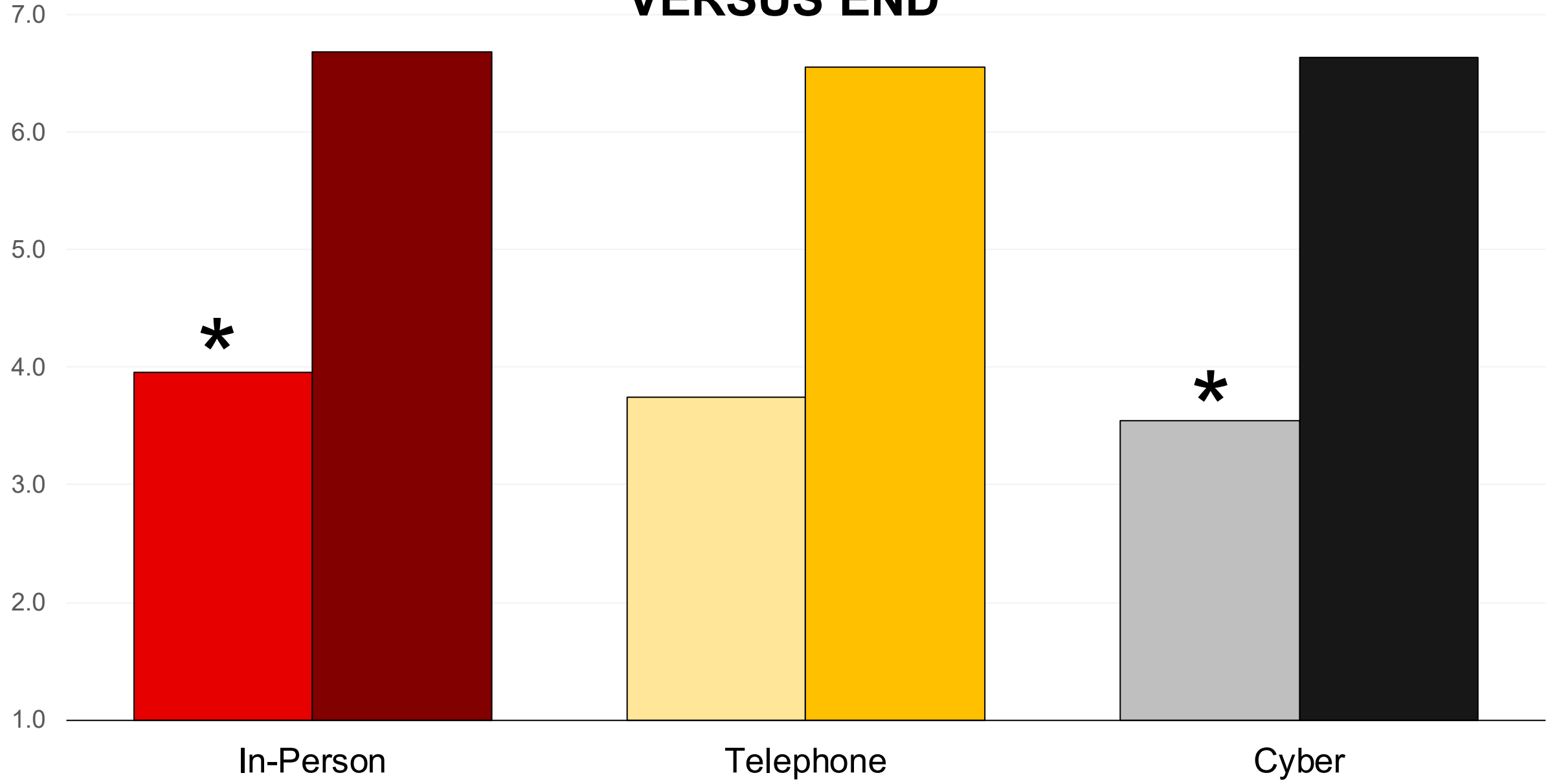
Across most criminal justice intervention variables, in-person stalking was treated as the most serious, whereas cyberstalking was minimized


CJ Intervention	In-Person	Cyber	<i>p</i>
Police notification	6.47	6.19	.010
Call police if you were victim	5.93	5.44	.001
Legal intervention	5.87	5.59	.032
Timing of intervention	4.57	4.82	.001
Harassment charges	6.03	5.78	.028
Punishment severity	4.34	4.09	.047





BEHAVIOURS INTERPRETED AS 'STALKING' AT BEGINNING VERSUS END



A black and white photograph of a person wearing a dark hoodie, sitting at a desk and using a laptop. The person's face is obscured by the hood. The background is dark with a digital rain effect, consisting of white characters and symbols falling from the top. The text is overlaid on the top half of the image.

Failure to recognize early signs of cyberstalking suggest better education and prevention measures needed



Interestingly, perpetrator's actions were interpreted as 'wrong', harmful and indicative of emotional instability more often in phone stalking relative to cyber or in-person stalking.

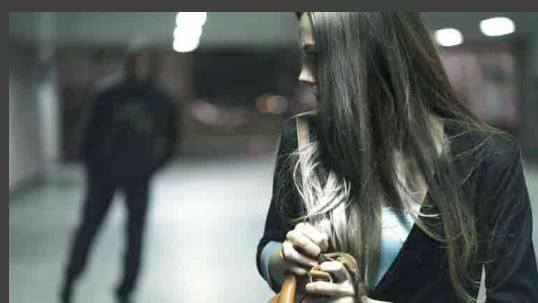




STALKER GENDER

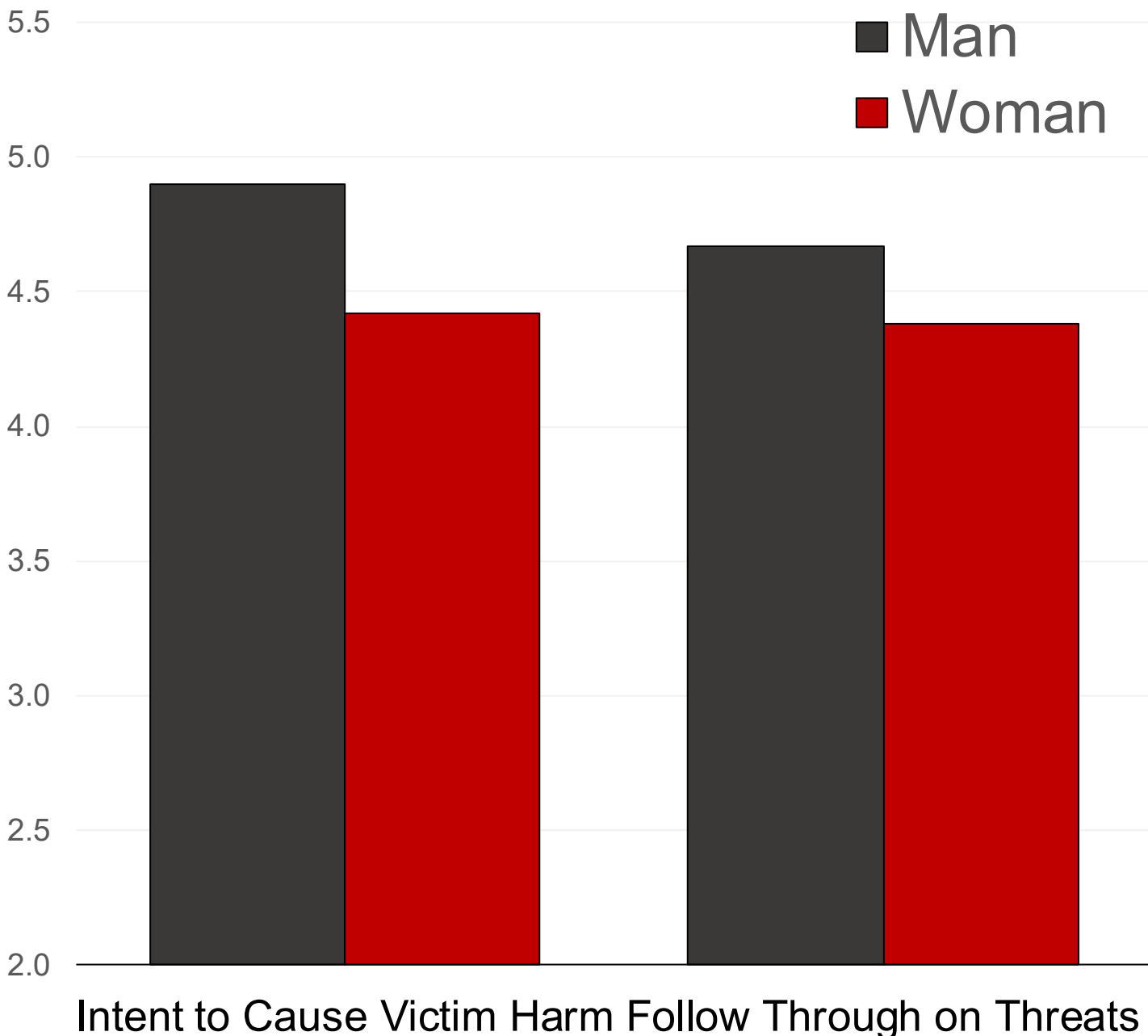


Overall, stalking perpetrated by **men** was rated as more serious and in need of criminal justice intervention





Men who stalk were viewed as more likely to harm their victims and follow through on their threats





When Stalker is a:	Man	Woman	<i>p</i>
Victim vulnerability	5.58	5.15	.001
Victim fear	6.56	6.18	.001
Likelihood bodily injury	5.21	4.70	.001
Stalking Realism	5.72	5.53	.033

Victims rated as more vulnerable, afraid, and likely to be hurt when the stalker is a man





Acquaintance



Stranger



Former Partner

~~PERPETRATOR-VICTIM~~ RELATIONSHIP



Stalking strangers was more strongly associated with potential mental health concerns



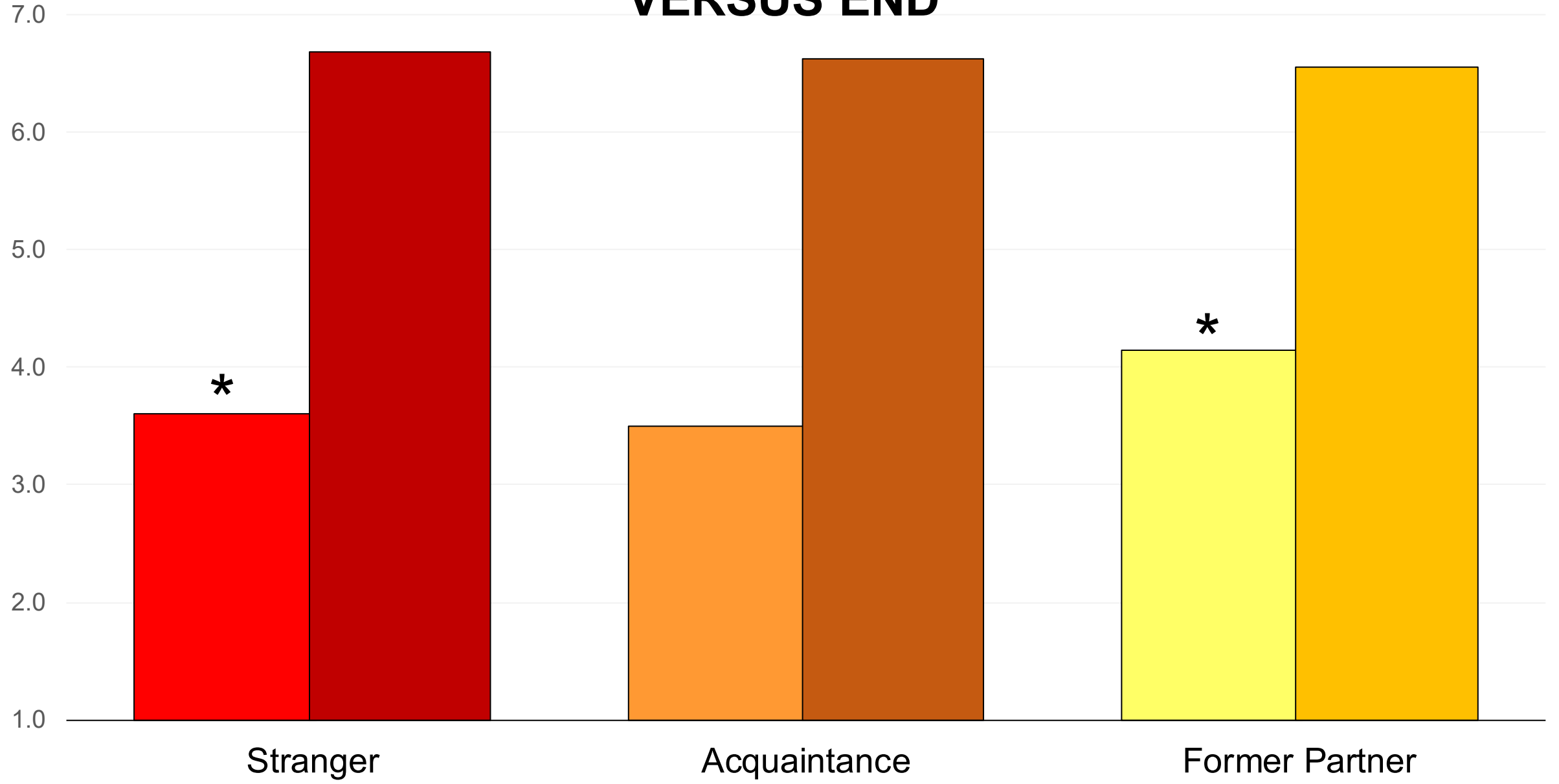
When Stalker is a:	Stranger	Acquaintance	Former Partner	<i>p</i>
Perpetrators behaviour is strange	6.34	6.21	6.12	.050
Perpetrator is psycho/disturbed	5.87	5.72	5.59	.024
Perpetrator is 'creepy'	6.50	6.41	6.19	.005
Perpetrator needs psychiatric help	6.22	6.11	5.87	.009



STRANGER
-DANGER-



BEHAVIOURS INTERPRETED AS 'STALKING' AT BEGINNING VERSUS END





**Signs your ex
is stalking you**

BEHAVIOURAL FAMILIARITY

When we are familiar with an individual, it may be easier to distinguish adaptive versus maladaptive behavioural patterns.

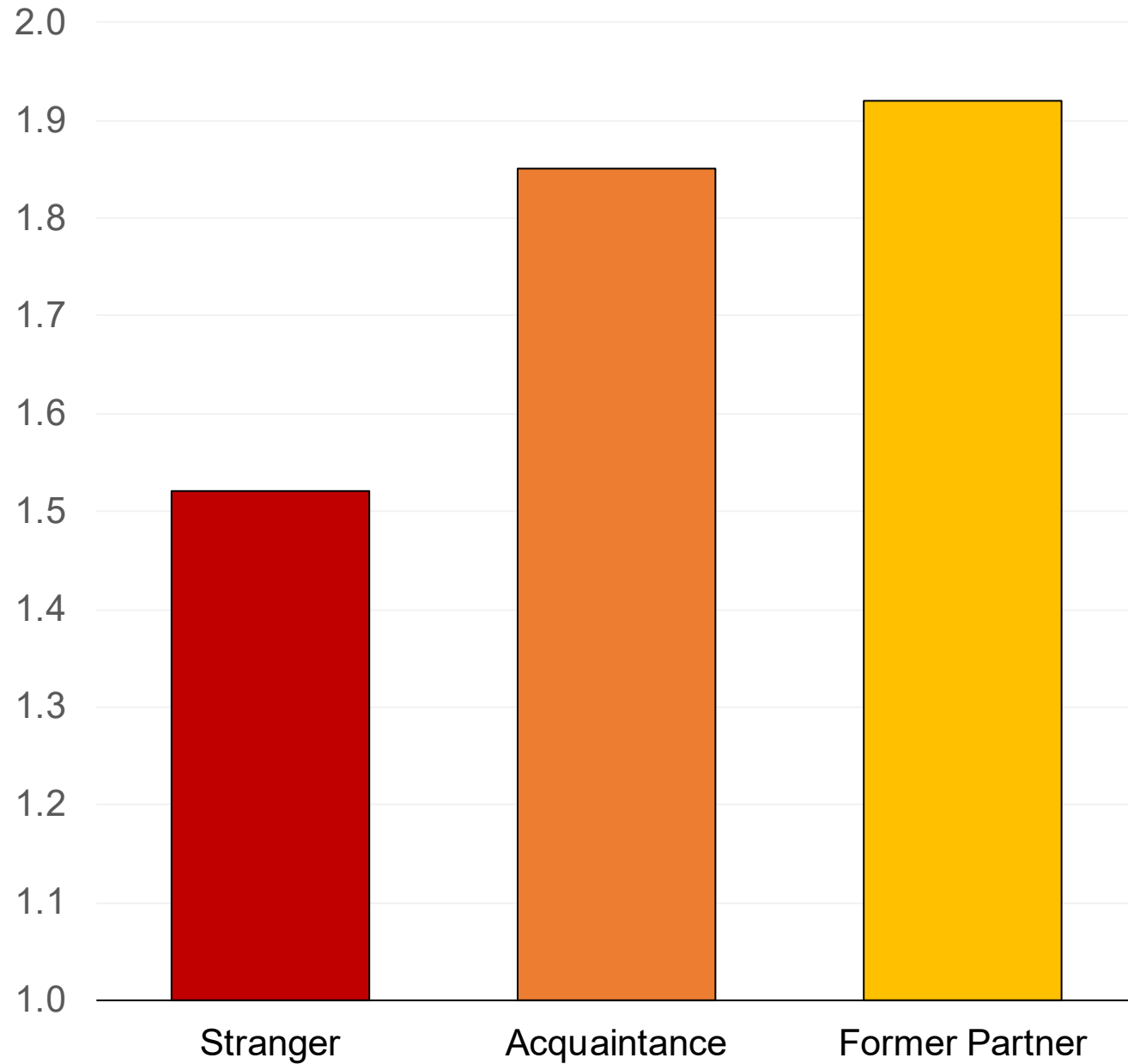
EXAMPLE: “That’s odd, they hate this kind of movie, why would they be here?”

We are most likely to be stalked by someone that we know, but not necessarily a former partner



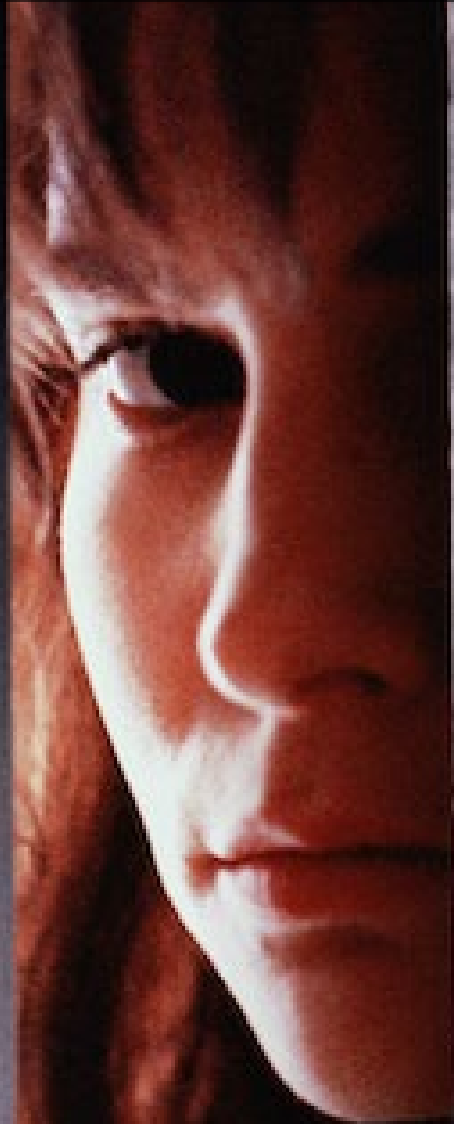


VICTIM RESPONSIBILITY



Any history of association with the perpetrator led to increased victim blaming

CONCLUSIONS





Thanks for

YOUR

attention ...

QUESTIONS? Mattise Gauthier at
gauthierm42@macewan.ca