



Inspiring Professional Development on a Shoestring: Facilitating Learning Opportunities for Information Literacy Instructors

Lisa Shamchuk
MacEwan University

May 21, 2014
WILU 2014



Outline

1. IL Community
2. Library PD Days
3. IL Palooza
4. Costs





IL Community

Exploring
Belonging Sharing
Community Understanding
Experiencing Mentoring
Coaching Communication
Self-reflection
Learning Insight
Identity



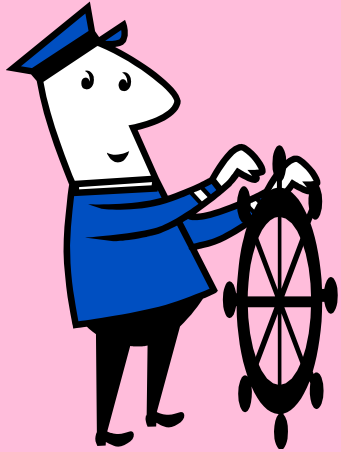
IL Community

- Possible Activities:
 - View a webinar
 - Discuss a journal article
 - Show & Share during a roundtable
 - Teaching Triangles (ongoing)
 - Discuss postings on intranet
 - Present lightning strike topics
 - Observe demonstrations



IL Community: Teaching Styles Workshop

Reflect: What type of teacher are you?

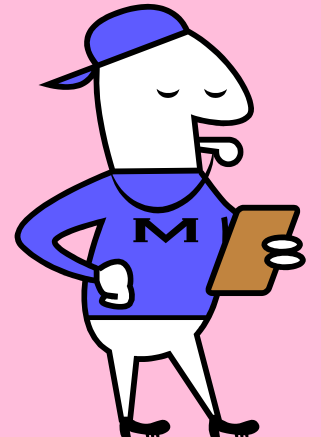
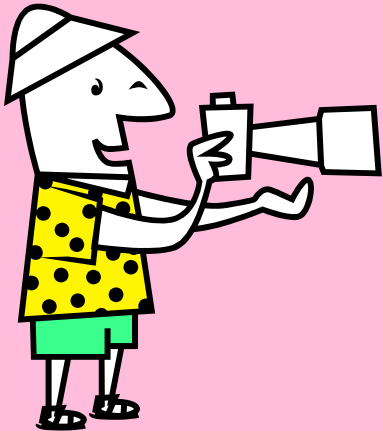


What image best describes you as a teacher?

- Ship's Captain?
- Tour Guide?
- Soapbox Philosopher?
- Coach?



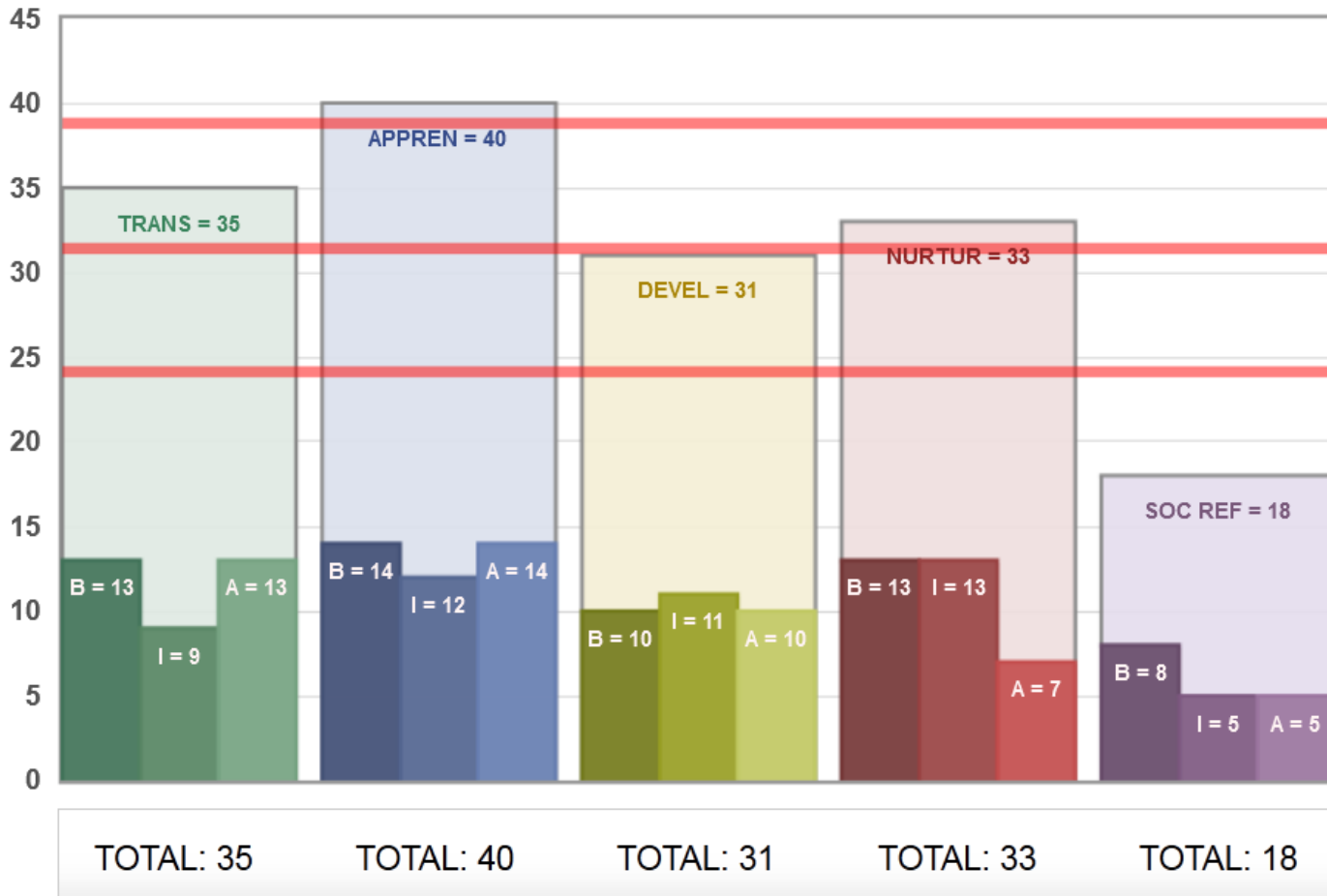
Discuss why you chose that image.





IL Community: Teaching Styles Workshop

<http://www.teachingperspectives.com>





IL Community: Teaching Triangles

Teaching Triangles



IL Community



What's On

Tuesday
August 27, 2013

Sessions:
10am-12pm
1pm-4pm
City Centre
Library
Lab 7-202C

BBQ:
4pm-6pm
City Centre
Campus
Towers Pub

Join us for one of our biannual internal MacEwan Library Professional Development days! All staff from all departments are welcome to attend any sessions throughout the day. We will end the day with our annual Welcome Back BBQ!

Questions? Contact
Donna about the BBQ or
Lisa about the PD
sessions.

Library Professional Development Day & Welcome Back BBQ

English Instruction Training

10am-11am: Face-To-Face Learning Activities

Joan will present on teaching our traditional face-to-face ENGL 102/111 classes using the English Library Instruction Program Manual. Please attend if you will be teaching ENGL 102/111 this Fall.

11am-12pm: 4 Points of Contact Blended Model

Joan will focus on the new "4 Points of Contact Blended Model" we will be rolling out to English classes this Fall. Everyone is welcome to attend to learn about this new model.

1pm-3pm: Reference Reboot

Nicolle and Eva will discuss what's new on the Reference Desk this term! All staff who work on the Reference Desk should attend to learn about the new policies and procedures we'll be using this Fall. There will be a short break during this session.

3pm-4pm: Identifying and Assisting Students In Distress: What Library Staff Need to Know

Counsellor Brenda Barrett will teach us about student mental health and offer tips and ideas for providing excellent service to all students within the library. All staff who work at our various service desks are encouraged to attend.

4pm-6pm: Welcome Back BBQ

Join us for our annual BBQ in Towers Pub!



Library PD Days



Library PD Days





IL Palooza

IL PALOOZA

LIGHTS! CAMERA! ACTION!

**Wednesday, April 16, 2014: 1PM-4PM
City Centre Campus - MacEwan University**

<http://sites.macewan.ca/ilpalooza/>



IL Palooza

- Death by Powerpoint
- Humour in the Classroom
- Using Wikipedia for IL Fluency
- Online IL Courses
- Using Google Docs for Teaching
- IL Assessment
- Video Tutorials
- Online Instructional Design
- Research Updates
- Library Orientation Videos



Costs

Event	Price	Cost
IL Community	Treats	\$20 + \$20
Library PD Days		\$20 + \$20 \$20
IL Palooza	ES	\$500
	Annual Total	\$600





Questions?

ShamchukL@macewan.ca



References

- Blankenship, S. S., & Ruona, W. A. (2007). Professional learning communities and communities of practice: A comparison of models, literature review. Paper presented at the Academy of Human Resource Development International Research Conference in The Americas.
- Cambridge, D., Kaplan, S., & Suter, V. (2005). Community of practice design: A step-by-step guide for designing and cultivating communities of practice in higher education. *EDUCAUSE*. Retrieved from <http://net.educause.edu/ir/library/pdf/nli0531.pdf>
- Hook, S. J., Stowell Bracke, M., Greenfield, L., & Mills, V. A. (2003). In-house training for instruction librarians. *Research Strategies*, 19(2), 99-127. doi:10.1016/j.resstr.2003.12.001
- Lo, P. (2008). Empowering Your Library: Training and Professional Development, A Library Imperative!. *International Journal Of Learning*, 14(12), 41-52. Retrieved from <http://thelearner.com/publications/journal/>
- Miller, R. E. (2011). Reference communities: Applying the community of practice concept to development of reference knowledge. *Public Services Quarterly*, 7(1/2), 18-26. doi:10.1080/15228959.2011.572772
- Mount Allison University. (n.d.). Purdy Crawford teaching center: Programs: Teaching triangles. Mount Allison University. Retrieved from: <http://www.mta.ca/community/academics/pctc/programs/programs/>