



# **Pluralistic Mating Strategies: Examining Sexual Orientation with CNM, Jealousy, Sex Drive, and Sociosexuality**

Crystal Pavlis (& Dr. Lynne Honey)

Psychology Department

MacEwan University



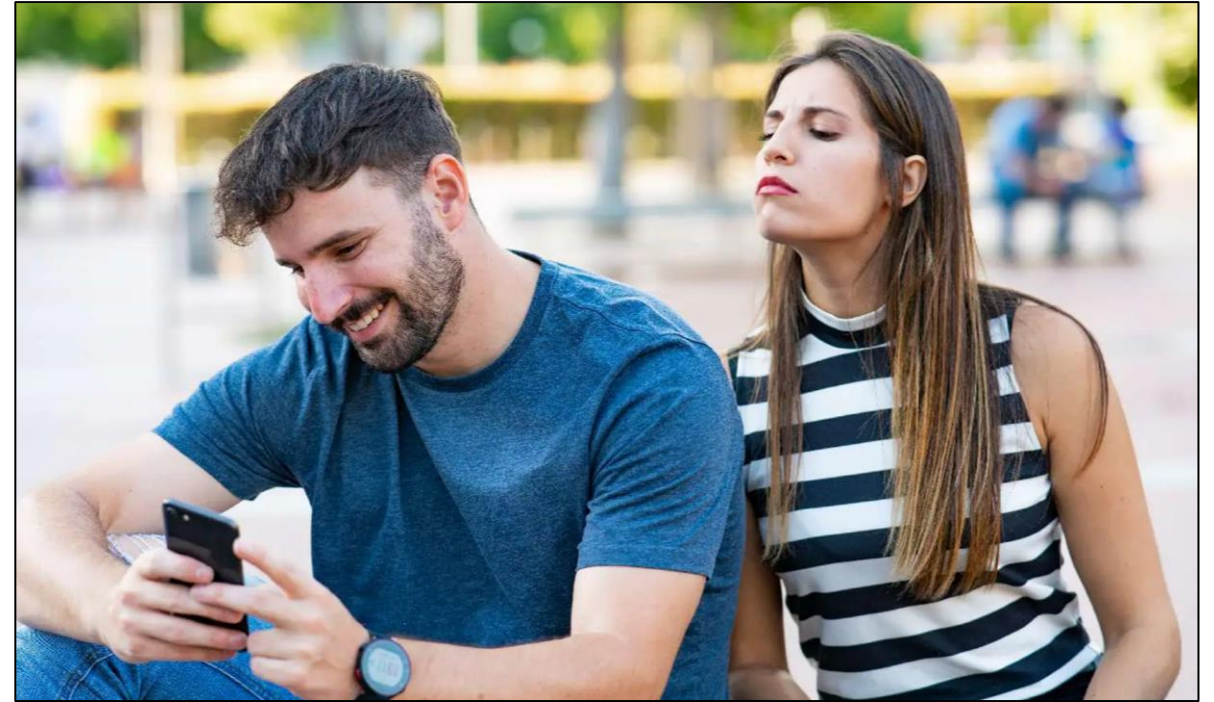
# Introduction

# Evolutionary Theory of Jealousy

David Buss'  
Evolutionary  
Theory of  
Jealousy  
(1992-1998)

- Women are expected to experience more upset toward emotional infidelity.
- Men are expected to experience more upset toward sexual infidelity.

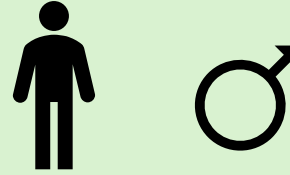




# Jealousy Toward Emotional and Sexual Infidelity

# Sexual Orientation

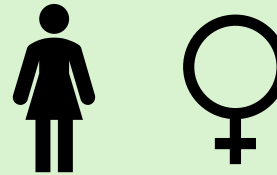
- **Androphilia:** sexual attraction to men and masculinity.



- **Ambiphilia:** sexual attraction to more than one gender (or both women and men).



- **Gynephilia:** sexual attraction to women and femininity.



# Sociosexuality



Restrictive



Permissive

# Consensual Non-Monogamy (CNM)

- **Monogamy:**
  - A relationship approach wherein two people form an exclusive intimate partnership.
- **Consensual non-monogamy (CNM):**
  - A relationship approach wherein people may have more than one romantic and/or sexual partner at a time, and everyone involved is aware and consenting.



# Hypotheses

**H1:** Participants who identify as ambiphilic were predicted to report more permissive sociosexuality, high sex drives, and greater openness toward CNM than monosexuals.

**H2:** Participants who report greater openness toward CNM were predicted to report more permissive sociosexuality, high sex drives, and lower jealousy toward sexual infidelity.

**H3:** Participants who are gynephilic would report more sexual jealousy, androphilics would report more emotional jealousy, and ambiphilics would report similar levels of both.

# Methodology

## What is your sexual orientation?

- Exclusively attracted to women
- Mostly attracted to women, only incidentally attracted to men
- Somewhat more attracted to women than to other genders
- Equally attracted to all genders
- Somewhat more attracted to men than to other genders
- Mostly attracted to men, only incidentally attracted to women
- Exclusively attracted to men
- Not attracted to either women or men
- If you feel we need additional context to understand your response, please enter this here:

## How important is it for you to fulfill your sexual desire through activity with a partner?

- 0 - Not at all important
- 1
- 2
- 3
- 4
- 5
- 6
- 7
- 8 - Extremely important

This next set of questions will ask you to consider different hypothetical scenarios and indicate which would be more upsetting. For each item, please select the answer that best shows your thoughts and feelings.

For each of the following scenarios:

- Please think of a serious, committed romantic relationship that you have had in the past, that you currently have, or that you would like to have. Imagine that you discover that the person with whom you've been seriously involved became interested in someone else.

Which of the following two events would be more distressing:

(A) Imagining your partner falling in love with another person, or (B) Imagining your partner trying different sexual positions with another person.

A

B

12:29



To which extent would you be willing to engage in this type of consensual non-monogamy:

You and your partner may have sex with whomever they want, using condoms, no strings attached, no questions asked.

1 - Very unwilling

2

3

4

5

6

7 - Very willing

With how many different partners have you had sexual intercourse on *one and only one* occasion?

0

1

2

3

4

5-6

7-9

10-19

20 or more

# Results: Demographics

Subreddits:

- r/polyamory
- r/nonmonogamy
- r/bisexual
- r/lgbtstudies
- r/samplesize



N Total = 764  
n MacEwan = 456  
Mean Age: 26



■ Female ■ Male

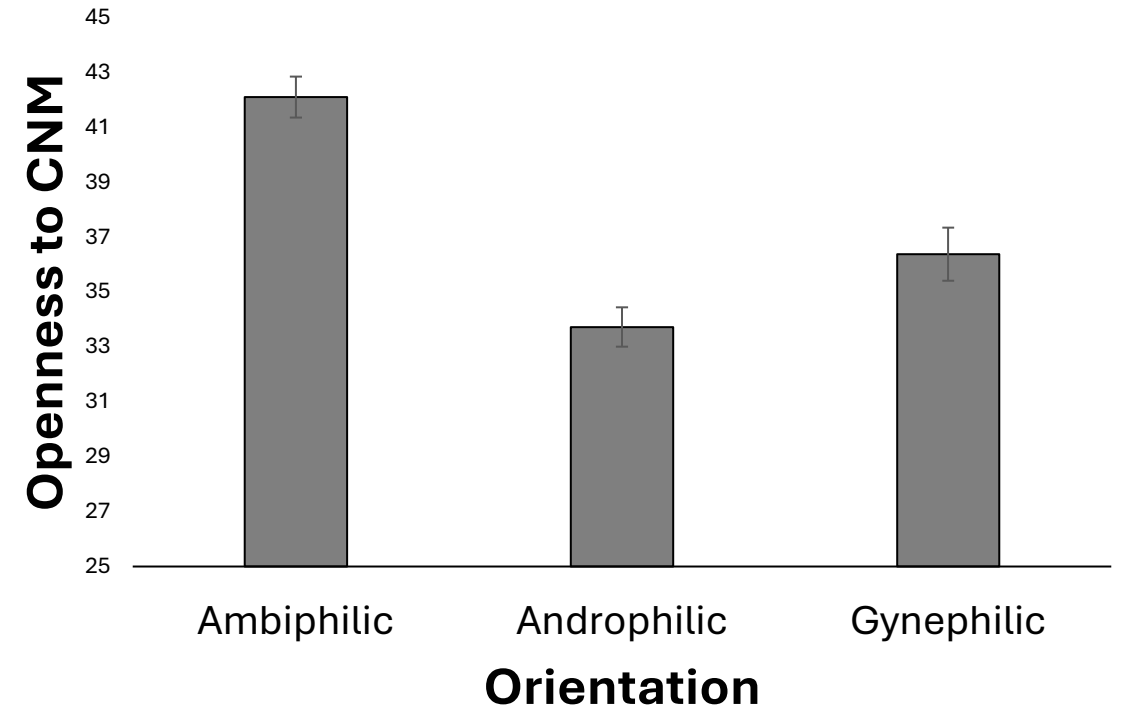
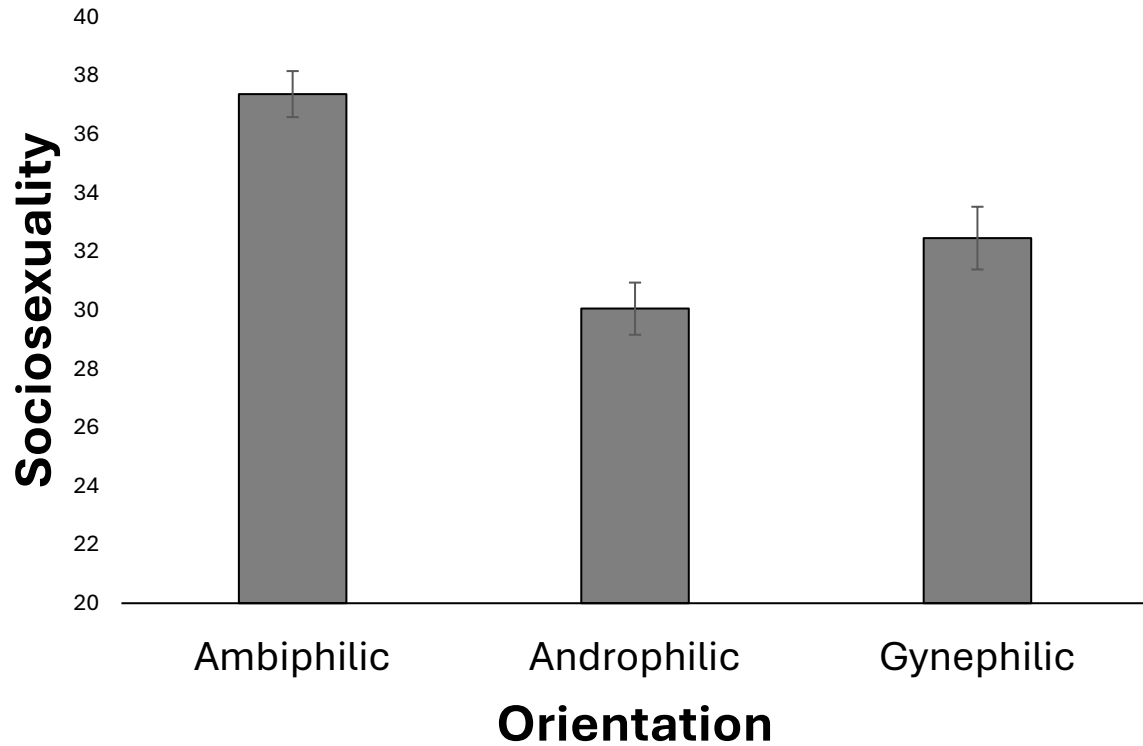


■ Ambiphilic ■ Androphilic ■ Gynephilic

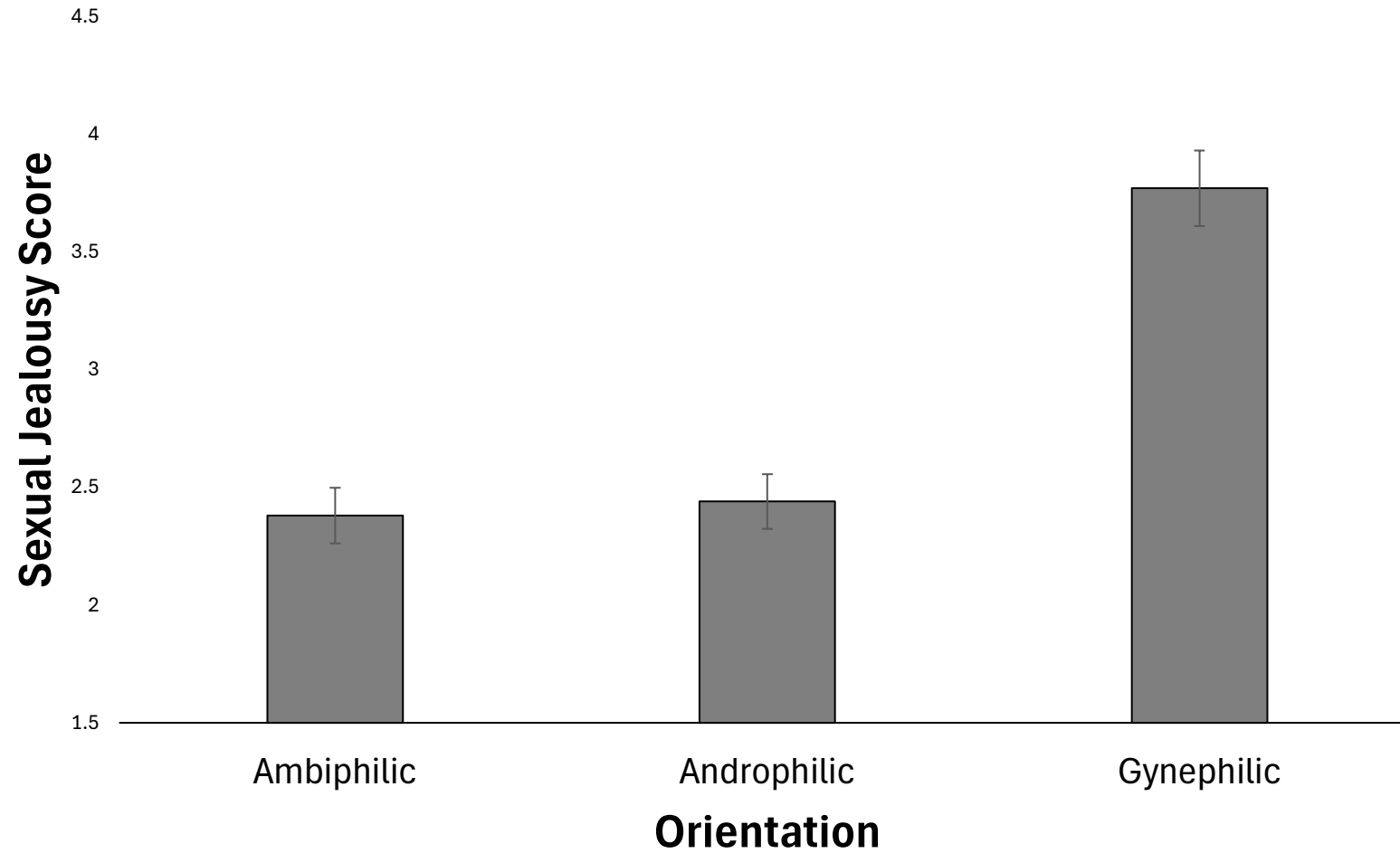


■ No ■ Yes

# H1 & H2: Sociosexuality & Openness to CNM



# H3: Sexual Jealousy



# Discussion

**H1: SUPPORTED** -> ambiphilics are significantly different from monosexuals, with higher sociosexuality, higher sex drives, and greater openness toward CNM.

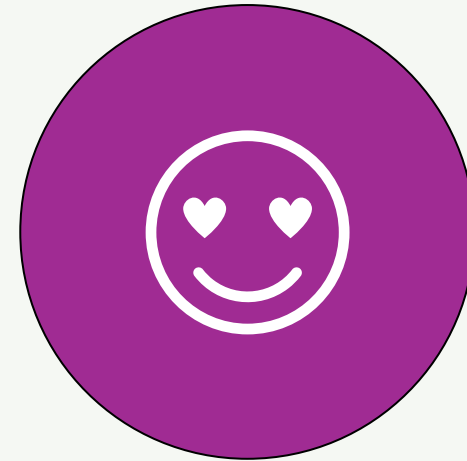
**H2: SUPPORTED** -> openness to CNM was predicted by higher sociosexuality, higher solitary sexual desire, and slightly lower dyadic sexual desire. It's not predicted by lower sexual jealousy, though.

**H3: SUPPORTED** -> gynephilics had the highest levels of sexual jealousy. No difference between androphilics and ambiphilics.

# Study Limitations



We did not ask about the gender of the imagined partner in the forced-choice jealousy scenarios.



The measures used in this study may not have effectively defined and measured “emotional infidelity.”

# Conclusion



# Q&A Period

## References:



## Contact Information:

- Crystal Pavlis: BSc Honours Psychology  
[pavlic2@mymacewan.ca](mailto:pavlic2@mymacewan.ca)
- Dr. Lynne Honey: Professor  
Psychology Department  
[lynne.honey@macewan.ca](mailto:lynne.honey@macewan.ca)